

Information for Participants

Date

May 10, 2026 Rain or shine

Location

Toyosaki Chura Sun Beach
(5-1, Toyosaki, Tomishiro-shi, Okinawa)



Event Schedule

07:30 Registration Opens
09:15 Opening Ceremony (including warm-up)
10:00 **Solo Division Starts**
11:45 Awards Ceremony (tentative)
12:30 **RUNET Walk Starts**
14:00 Event Ends

Athlete Check-in

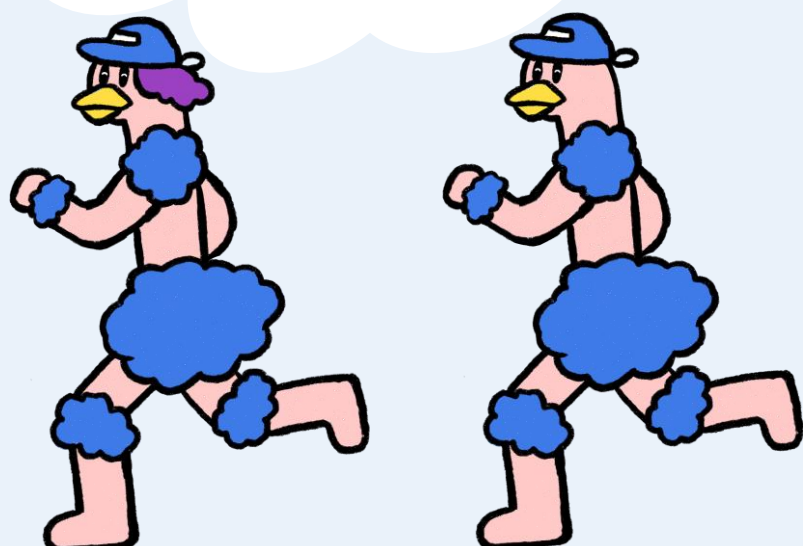
Registration for this event will be handled via RUNPASSPORT.



A QR code participant pass will be sent by email on Tuesday, April 28 and Friday, May 8. Please show it at the registration desk on the day of the event, either on your smartphone or as a printed copy.

Timing & Measurement

Two timing tags are attached to your sash pocket. Please put on your sash correctly before starting. **Please return your sash after finishing the race.**
**RUNNET Walk will not be timed.*



About Timing Results and Certificates

- Finisher certificates for this event are “RunPhoto+” certificates with photos. After the race, you can download your certificate using the QR code below. During the event, official RunPhoto photographers will take photos of runners on the course and at the finish line. You can choose your favorite photo to create a personalized finisher certificate.
- On the event day, you can check your time through the official results service.

【Race Results Service】



【RunPhoto+】



Water Station

Two water stations will be set up, one on the course and one at the venue. (Water and sports drinks)

Baggage Storage

Baggage storage is available only for Solo participants at the main venue tent. You will receive a tag when dropping off your bag. Please write your bib number on it and attach it to your bag. Valuables cannot be stored. Please keep them with you or use the coin lockers in the facility (administration building).

Parking Lot

Please use the parking lot at Toyosaki Chura Sun Beach.
Fee: ¥200 per 60 minutes (Maximum ¥500)

Course map

RUNNET
EKIDEN
OKINAWA



Course Guidelines

- The course is a loop.
- The course width ranges from 2 m to 5.5 m.
- Please keep left at all times.

1 lap: 3 km

- Solo × 6 laps (total 18 km)
- EKIDEN Walk × 1 laps (total 3 km)

Runner Etiquette

• For safety reasons, dangerous passing is prohibited.

• Spitting is not allowed.

• Please keep track of your own lap count.

Staff will not provide lap counting assistance.

• If you need to withdraw from the race, please notify the nearest staff member.

